



THE DEFINITIVE GUIDE TO **SPAWN NEWSSTAND EDITIONS** SPAWNWORLD.COM

What are Newsstand Editions?

Like most comics of the early 90s, Spawn was sold in two distinct formats: Direct Edition and Newsstand Edition. Generally speaking, Direct Edition issues were sold from comic book stores, and Newsstand Edition issues were sold from places like grocery stores, drug stores, and of course, newsstands.

In terms of collecting, Newsstand Editions differ from Direct Editions in a few important ways:

- First, they were generally sold on spinner racks or open shelves, often to non-collectors. This means that issues that survive are typically in worse condition than their Direct Edition counterparts.
- Second, they were typically printed on lower quality paper that was thinner, and more susceptible to damage, making high grade copies even more difficult to find.
- Third, they were sometimes return-able. Meaning that unsold copies could be returned to the publisher by the retailer for a refund. This further decreased the number of issues remaining in the market today.

Spawn Newsstand Editions

Spawn Newsstand Editions were sold (with a few exceptions) until August 2004. They were generally printed on a thinner newsprint paper, with a thinner paperstock for the cover than the direct editions. They almost always have a barcode on the front cover (unlike the direct editions), which is the easiest way to spot them.

A Note about Variants:

Below you'll find a complete checklist of every known Spawn Newsstand Edition, including all known production variants. But what constitutes a variant? Occasionally there were production changes on newsstand issues, resulting in variants. Most often, these involved the barcode itself, but sometimes they involved the contents, or the paper quality of the book. This list includes intentional changes that resulted in significant differences for all remaining issues published down the line. It does not include production errors that resulted in only an issue or two with an abnormality.

FAQ

How can you tell the difference between the various paper qualities?

It's very easy to feel the differences when examining both newsstand and direct editions side-by-side, but it can be difficult to describe otherwise. The easiest way to quantify the difference is to weigh the books.

Are there Newsstand Editions of variant covers?

No. Spawn books with variant covers (such as issue #100, or Spawn: The Dark Ages #1) only received 1 newsstand edition, which uses the "standard" cover (regardless of the number of variant covers).

Is a barcode and a UPC code the same thing?

Technically, no. A UPC code is a specific format of barcode, although the name tends to be used generically by the public (kind of like Kleenex).

Why are some of the printed barcodes different?

There are a few styles of barcode that were used:

- "Standard" barcodes with no additional text.
- "Newsstand" barcodes with the word "NEWSSTAND" above the code.
- "ADS Newsstand" barcodes with the text "ADS NEWSSTAND" above the code.
- "Thin" barcodes that are roughly half the height of standard codes.

I don't know why the style changed occasionally. Sometimes an error was made on the barcode (issues 101-105 in particular) in which a correction sticker was placed on top.

Why do some books have different barcode numbers?

For Spawn issues 16-77, Spawn had two different, concurrent distributors. This resulted in books with different numbers on the barcode. For collecting, the best way to organize the books is by the distributor code, which is the first group of 5 digits in the barcode. Spawn used the following codes: (see table on right)

Why did they stop making Newsstand Editions?

Presumably, they became unprofitable. As far as I'm aware, Spawn was the last Image Comics book with a newsstand edition (it was also the first!).

Were Newsstand Editions released 1:100 from Direct Editions?

No. Part of the confusion with this claim comes from semantics. In discussing comics, ratios like 1:25, or 1:100 refer to retailer incentives. Meaning, a retailer would have to order 25 standard issues to receive 1 incentive issue, resulting in a 1:25 incentive. It does not refer to how many were printed. Newsstand Editions were never incentive issues.

Ok, but are there 100 standard issues for every one newsstand?

Not necessarily. Spawn print sizes are not publicly released. The best we can do is to make a guess based on industry patterns and order numbers from Diamond distribution.

- We can reasonably assume that newsstands were printed at a low percentage of the total print run



Spawn Barcode Distributor Codes

Issue	Primary	Secondary
1-15	70989	n/a
16-23	70989	73361
24-45	70992	73361
46-49	74470	73361
50	70989	74851
51-68	74470	73361
69-71	n/a	73361
72-77	14302	73361
78-97	14302	n/a
98-99	74470	n/a
100	25274	n/a
101-102	74470	n/a
103	74470 & 14302	n/a
104-137	74470	n/a

for the issue.

- We can reasonably assume that the ratio of Newsstand to Direct Editions declined as time went on.
- We can reasonably assume that there are fewer Newsstand Editions that survive in circulation because of return-ability and clientele.

But someone said that 99% of comics released by Image Comics were Direct Editions, with only 1% being newsstands?

It's not possible to determine the actual percentage with currently available data. Image Comics has not released any concrete data on the ratio (nor has McFarlane).

Why do some barcodes have a sticker placed over them?

Some of the barcodes were printed incorrectly, and correction stickers were placed over the top by the publisher. Some stickers also seem to be for regional distribution.

Should I try to remove the stickers?

No. As the stickers were placed there by the manufacturer, they are a part of the original item. They're different than a price sticker added by a retailer.

Why are some of the barcode correction stickers different?

There are 4 distinct types of barcode stickers used:

- "Prices" stickers with US and Canadian retail prices listed.
- "No Prices" stickers with no prices or text except for the barcode.
- "E" stickers with a lower-case "e" icon preceding the barcode.
- "Canada" stickers with Canadian retail price listed.

I've not yet determined why the sticker changes were made, although some appear to be intended for distribution to different regions.

Where is Curse of the Spawn 17?

Although copies of this book have been found, it would appear it was never fully distributed. Fewer than 10 copies are known to exist.

What's the deal with issue 64?

This issue is unique in that its barcode is on the back cover instead of the front. The primary distributor used the code on the back (no sticker), whereas the secondary distributor covered the code with a plain white sticker, and placed a new barcode "e" sticker on the front cover (with an updated code).

Why are issues 69-71 so hard to find?

Unlike most newsstand issues, these were printed on thick, glossy paper, identical to the Direct Editions. They were only released by the secondary distributor, none from the primary. Likewise, during this same period, Curse of the Spawn issues 16-19 were printed on the same thick, glossy paper. Perhaps there was a problem with the supply of newsprint paper at this time? For whatever the reason, far fewer of these issues are in circulation.



Why is issue 111 so hard to find?

This is still a mystery – but it definitely exists in much lower numbers than other issues.

Where are issues 113-115?

For whatever reason, these issues never made it to market. Interestingly, issue 112 can be found in abnormally high quantities, because it remained on the shelves for 4 months.

Where can I find more info or cover photos of these?

You can find cover photos and detailed issue information for every issue in the SpawnWorld Newsstand Editions section (spawnworld.com/books/newsstand.htm).

How much are these worth?

I won't try to keep up with current prices in this guide. The best indicators for current value are completed-auction prices. However, the rarity of these books, especially in high grade, can make them considerably more valuable than their direct edition counterparts.

Does CGC differentiate Spawn newsstand editions from direct editions?

Formerly, CGC did not recognize newsstand editions to be unique except for issue #9. More recently, I was told that they had begun to recognize all Spawn newsstand editions except for issues #1-4. However in practice, their policy is applied very inconsistently.

Why would CGC treat issue #9 as more unique than the others?

At least in the past, CGC only differentiated newsstand and direct editions when there were differences beyond just a barcode. Spawn 9 newsstand has a different paperstock than the direct edition, so CGC noticed and labeled it as a newsstand. Ironically, the majority of Spawn newsstand editions have a different paperstock than their direct editions, not just #9.

Why wouldn't CGC recognize issues #1-4?

I have no idea.

Do the issues with barcode stickers receive a green label or blue label from CGC?

I've seen both, but usually green. Their official policy on this seems to be inconsistent.

Spawn appeared in an issue of _____, why isn't it included here?

For this list, only issues that meet one of the following criteria have been included:

- A first-party (McFarlane) Spawn-related comic (e.g. Spawn, Angela, etc.)
- A second-party (Image) comic with Spawn, or a primary Spawn character in the title (e.g. Spawn/WildCATS, Medieval Spawn/Witchblade, etc.)
- A third-party (e.g. DC) comic with Spawn in the title (e.g. Batman/Spawn: War Devil, etc.)

Spawn issue ___ has a barcode on the front cover, is it a newsstand edition?

- For issues #1-137, if it has a barcode on the front cover, it is a newsstand edition.
- For issue #64, if it has a barcode on the back cover, it is a newsstand edition.
- For any issue after #137, even if it has a barcode on the front cover, it is not a newsstand edition (issues #192-#199 for example all have barcodes on their front covers).

NEWSSTAND CHECKLIST

SPAWN (ONGOING SERIES)

#001

- “Clean” inside cover icon
- Newsprint pages (Same as direct)
- Poster on glossy paper

#002 v01

- Weight ≈ 55g
- Thin cover
- No month in issue number box
- Newsprint pages (same as direct)

#002 v02

- Weight ≈ 43g
- Thin cover
- No month in issue number box
- Thinner newsprint pages

#003

- Weight ≈ 43g
- Thin cover
- No month in issue number box
- Thinner newsprint pages

#004

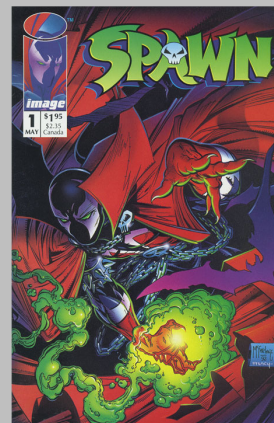
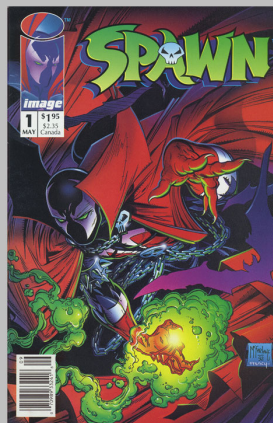
- Weight ≈ 43g
- Thin cover
- Thinner newsprint pages
- No Image #0 coupon

#005

- Weight ≈ 43g
- Thin cover
- No month in issue number box
- Thinner newsprint pages
- No poster

#006

- Weight ≈ 43g
- Thin cover
- No month in issue number box
- Thinner newsprint pages



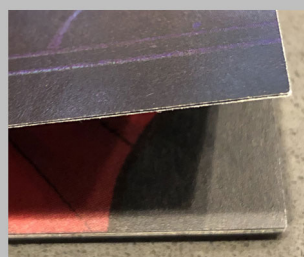
Spawn #1 was the first Image title to be released in a newsstand format. Every Spawn newsstand edition has a barcode printed on the cover (except issue 64). Other differences between newsstand and direct editions are listed here in this checklist.



Spawn #1 was printed on the same paper as the direct edition.

Beginning with issue #2, the month was (usually) removed from the newsstand editions.

The paperstock used for the covers of the newsstand editions became thinner (and lighter)



Thick Direct Edition Cover

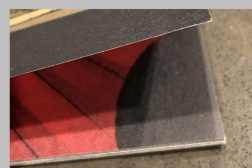


Thin Newsstand Edition Cover

Most noticeable was the change to the interior paper.

The first copies of Issue #2 were released with the same thick newsprint as Issue #1. But mid-production, the paperstock was changed to a thinner, lighter paper. This thinner paper became the standard for newsstand editions (with a few exceptions) until issue 123.

The paper change is easily identified by the weight.



Original newsprint paper



Thinner newsprint paper

Whereas both editions of Spawn #1 included a poster, issues 4, 5, 7, 8, & 9 all had a poster or coupon in the direct editions that the newsstand editions lacked.

Beginning with Spawn #9, direct editions were printed on a thick, glossy paper (top), whereas newsstand edition pages mostly remained on newsprint (bottom).



- #007 • Weight ≈ 43g
- #007 • Thin cover
- #007 • No month in issue number box
- #007 • Thinner newsprint pages
- #007 • No poster

- #008 • Weight ≈ 43g
- #008 • Thin cover
- #008 • No month in issue number box
- #008 • Thinner newsprint pages
- #008 • No poster

- #009 • Thin cover
- #009 • No month in issue number box
- #009 • Newsprint pages
- #009 • No poster

- #010 • Thin cover
- #010 • No month in issue number box
- #010 • Newsprint pages

- #011 • Thin cover
- #011 • No month in issue number box
- #011 • Newsprint pages
- #011 • Poster on newsprint

- #012 • Thin cover
- #012 • No month in issue number box
- #012 • Newsprint pages
- #012 • Poster on newsprint

- #013 • Thin cover
- #013 • No month in issue number box
- #013 • Newsprint pages
- #013 • Poster on newsprint

- #014 • Thin cover
- #014 • No month in issue number box
- #014 • Newsprint pages

- #015 • Thin cover
- #015 • No month in issue number box
- #015 • Newsprint pages

Beginning with issue #16, Spawn had two concurrent distributors. This resulted in newsstand issues being printed with two different barcode numbers.



The primary code (left) for issue #16 has a distributor code of 70989.

The secondary code (right) for issue #16 has a distributor code of 73361.

#016 v01

- 70989 code
- Thin cover
- No month in issue number box
- Newsprint pages

#016 v02

- 73361 code
- Thin cover
- No month in issue number box
- Newsprint pages

#017 v01

- 70989 code
- Thin cover
- No month in issue number box
- Newsprint pages

#017 v02

- 73361 code
- Thin cover
- No month in issue number box
- Newsprint pages

#018 v01

- 70989 code
- Thin cover
- No month in issue number box
- Newsprint pages

#018 v02

- 73361 code
- Thin cover
- No month in issue number box
- Newsprint pages

#019 v01

- 70989 code
- Thin cover
- No month in issue number box
- Newsprint pages

#019 v02

- 73361 code
- Thin cover
- No month in issue number box
- Newsprint pages

#020 v01

- 70989 code
- Thin cover
- No month in issue number box
- Newsprint pages

#020 v02

- 73361 code
- Thin cover
- No month in issue number box
- Newsprint pages

#021 v01

- 70989 code
- Thin cover
- No month in issue number box
- Newsprint pages

#021 v02

- 73361 code
- Thin cover
- No month in issue number box
- Newsprint pages

#022 v01

- 70989 code
- Thin cover
- No month in issue number box
- Newsprint pages

#022 v02

- 73361 code
- Thin cover
- No month in issue number box
- Newsprint pages

#023 v01

- 70989 code
- Thin cover
- No month in issue number box
- Newsprint pages

#023 v02

- 73361 code
- Thin cover
- No month in issue number box
- Newsprint pages

#024 v01

- 70992 code
- Thin cover
- No month in issue number box
- Newsprint pages

#024 v02

- 73361 code
- Thin cover
- No month in issue number box
- Newsprint pages

#025 v01

- 70992 code
- Thin cover
- Newsprint pages

#025 v02

- 73361 code
- Thin cover
- Newsprint pages

#026 v01

- 70992 code
- Thin cover
- No month in issue number box
- Newsprint pages

#026 v02

- 73361 code
- Thin cover
- No month in issue number box
- Newsprint pages

#027 v01

- 70992 code
- Thin cover
- No month in issue number box
- Newsprint pages

#027 v02

- 73361 code
- Thin cover
- No month in issue number box
- Newsprint pages

The back cover of Spawn #28 newsstand (top) differs from the direct edition (bottom). The ads have been reversed between the inside and outside.



#028 v01

- 70992 code
- Thin cover
- Newsprint pages
- Inside and outside of back cover are reversed from the direct edition

#028 v02

- 73361 code
- Thin cover
- Newsprint pages
- Inside and outside of back cover are reversed from the direct edition

#029 v01

- 70992 code
- Thin cover
- No month in issue number box
- Newsprint pages

#029 v02 • 73361 code
• Thin cover
• No month in issue number box
• Newsprint pages

#030 v01 • 70992 code
• Thin cover
• No month in issue number box
• Newsprint pages

#030 v02 • 73361 code
• Thin cover
• No month in issue number box
• Newsprint pages

#031 v01 • 70992 code
• Thin cover
• No month in issue number box
• Newsprint pages

#031 v02 • 73361 code
• Thin cover
• No month in issue number box
• Newsprint pages

#032 v01 • 70992 code
• Thin cover
• No month in issue number box
• Newsprint pages

#032 v02 • 73361 code
• Thin cover
• No month in issue number box
• Newsprint pages

#033 v01 • 70992 code
• Thin cover
• No month in issue number box
• Newsprint pages

#033 v02 • 73361 code
• Thin cover
• No month in issue number box
• Newsprint pages

#034 v01 • 70992 code
• Thin cover
• No month in issue number box
• Newsprint pages

#034 v02 • 73361 code
• Thin cover
• No month in issue number box
• Newsprint pages

#035 v01 • 70992 code
• Thin cover
• Newsprint pages

#035 v02 • 73361 code
• Thin cover
• Newsprint pages

#036 v01 • 70992 code
• Thin cover
• Newsprint pages

#036 v02 • 73361 code
• Thin cover
• Newsprint pages

#037 v01 • 70992 code
• Thin cover
• No month in issue number box
• Newsprint pages

#037 v02 • 73361 code
• Thin cover
• No month in issue number box
• Newsprint pages

#038 v01 • 70992 code
• Thin cover
• Newsprint pages

#038 v02 • 73361 code
• Thin cover
• Newsprint pages

#039 v01 • 70992 code
• Thin cover
• Newsprint pages

#039 v02 • 73361 code
• Thin cover
• Newsprint pages

#040 v01 • 70992 code
• Thin cover
• Newsprint pages

#040 v02 • 73361 code
• Thin cover
• Newsprint pages



Issue #41 was the last time that the month (or lack thereof) differed from the direct edition.

#041 v01 • 70992 code
• Thin cover
• No month in issue number box
• Newsprint pages

#041 v02 • 73361 code
• Thin cover
• No month in issue number box
• Newsprint pages

#042 v01 • 70992 code
• Thin cover
• Newsprint pages

#042 v02 • 73361 code
• Thin cover
• Newsprint pages

#043 v01 • 70992 code
• Thin cover
• Newsprint pages

#043 v02 • 73361 code
• Thin cover
• Newsprint pages

#044 v01 • 70992 code
• Thin cover
• Newsprint pages

#044 v02 • 73361 code
• Thin cover
• Newsprint pages

#045 v01 • 70992 code
• Thin cover
• Newsprint pages

#045 v02 • 73361 code
• Thin cover
• Newsprint pages

#046 v01 • 74470 code
• Thin cover
• Newsprint pages

#046 v02 • 73361 code
• Thin cover
• Newsprint pages

#047 v01 • 74470 code
• Thin cover
• Newsprint pages

#047 v02 • 73361 code
• Thin cover
• Newsprint pages

#048 v01 • 74470 code
• Thin cover
• Newsprint pages

#048 v02 • 73361 code
• Thin cover
• Newsprint pages

#049 v01 • 74470 code
• Thin cover
• Newsprint pages

#049 v02 • 73361 code
• Thin cover
• Newsprint pages

#050 v01 • 70989 code
• Thin cover
• Newsprint pages

#050 v02 • 74851 code
• Thin cover
• Newsprint pages

#051 v01 • 74470 code
• Thin cover
• Newsprint pages

#051 v02 • 73361 code
• Thin cover
• Newsprint pages

#052 v01 • 74470 code
• Thin cover
• Newsprint pages

#052 v02 • 73361 code
• Thin cover
• Newsprint pages

#053 v01 • 74470 code
• Thin cover
• Newsprint pages

#053 v02 • 73361 code
• Thin cover
• Newsprint pages

#054 v01 • 74470 code
• Thin cover
• Newsprint pages

#054 v02 • 73361 code
• Thin cover
• Newsprint pages

#055 v01 • 74470 code
• Thin cover
• Newsprint pages

#055 v02 • 73361 code
• Thin cover
• Newsprint pages

#056 v01 • 74470 code
• Thin cover
• Newsprint pages

#056 v02 • 73361 code
• Thin cover
• Newsprint pages

#057 v01 • 74470 code
• Thin cover
• Newsprint pages

#057 v02 • 73361 code
• Thin cover
• Newsprint pages

#058 v01 • 74470 code
• Thin cover
• Newsprint pages

#058 v02 • 73361 code
• Thin cover
• Newsprint pages

#059 v01 • 74470 code
• Thin cover
• Newsprint pages

#059 • 73361 code
v02 • Thin cover
 • Newsprint pages

The pages for issue #60 were bound correctly through the primary distributor, but incorrectly through the secondary distributor.

Pictured (top) is the correct first page from both the direct edition and the 74470 newsstand.

(Bottom) is the incorrect first page, as found in the 73361 newsstand edition.



#060 • 74470 code
v01 • Thin cover
 • Newsprint pages
 • Page order 1-32 (same as direct)

#060 • 73361 code
v02 • Thin cover
 • Newsprint pages
 • Page order: 9-17, 1-8, 25-32, 17-24

#061 • 74470 code
v01 • Thin cover
 • Newsprint pages

#061 • 73361 code
v02 • Thin cover
 • Newsprint pages

#062 • 74470 code
v01 • Thin cover
 • Newsprint pages

#062 • 73361 code
v02 • Thin cover
 • Newsprint pages

#063 • 74470 code
v01 • Thin cover
 • Newsprint pages

#063 • 73361 code
v02 • Thin cover
 • Newsprint pages

Issue 64 is an oddity. The direct edition was sold poly-bagged with a catalog, whereas the newsstand edition was not.

It is the only issue that has the barcode on the back cover instead of the front.

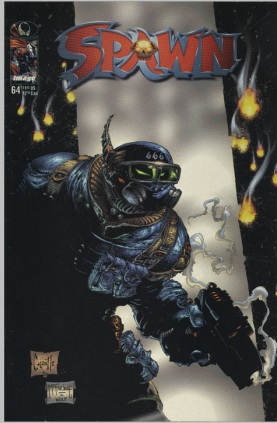


#64 v001 Back Cover

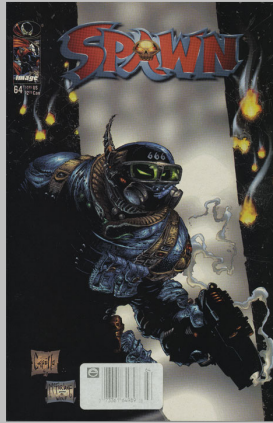


#64 v002 Back Cover

There is also a “corrected” edition with the barcode covered in a plain white sticker, and a new barcode sticker applied by the manufacturer to the front cover.



#64 v001 Front Cover



#64 v002 Front Cover

- #067 v01**
 - 74470 “Newsstand” code
 - Thin cover
 - Newsprint pages

- #067 v02**
 - 73361 “Newsstand” code
 - Thin cover
 - Newsprint pages

- #068 v01**
 - 74470 “Newsstand” code
 - Thin cover
 - Newsprint pages

- #068 v02**
 - 73361 “Newsstand” code
 - Thin cover
 - Newsprint pages

- #064 v01**
 - 74470 code on the back cover
 - No polybag or catalog
 - Thin cover
 - Newsprint pages
 - (No barcode sticker)

- #064 v02**
 - 73361 code “e” sticker on front
 - Barcode on back cover covered in a blank white sticker
 - No polybag or catalog
 - Thin cover
 - Newsprint pages

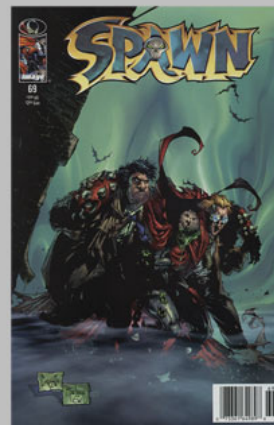
- #065 v01**
 - 74470 code
 - Thin cover
 - Newsprint pages

- #065 v02**
 - 73361 code
 - Thin cover
 - Newsprint pages

- #066 v01**
 - 74470 code
 - Thin cover
 - Newsprint pages

- #066 v02**
 - 73361 code
 - Thin cover
 - Newsprint pages

Issues #69-71 were printed on the same thick, glossy paper as their direct edition counterparts. They seem to have been distributed in far fewer numbers than many other newsstand issues, and only from the secondary distributor.



Newsstand Edition



Direct Edition

- #069**
 - 73361 code
 - Thin cover
 - Glossy pages (same as direct)

- #070**
 - 73361 code
 - Thin cover
 - Glossy pages (same as direct)

- #071**
 - 73361 code
 - Thin cover
 - Glossy pages (same as direct)

#072 v01 • 14302 code
• Thin cover
• Newsprint pages

#072 v02 • 73361 code
• Thin cover
• Newsprint pages

#073 v01 • 14302 code
• Thin cover
• Newsprint pages

#073 v02 • 73361 code
• Thin cover
• Newsprint pages

#074 v01 • 14302 code
• Thin cover
• Newsprint pages

#074 v02 • 73361 code
• Thin cover
• Newsprint pages

#075 v01 • 14302 code
• Thin cover
• Newsprint pages

#075 v02 • 73361 code
• Thin cover
• Newsprint pages

#076 v01 • 14302 code
• Thin cover
• Newsprint pages

#076 v02 • 73361 code
• Thin cover
• Newsprint pages



Issue #77 was released with two different barcode types: the “ADS Newsstand” code (top) from the primary distributor, and the “standard” code (bottom) from the secondary distributor.

This was the final issue with two distributors.

#077 v01 • 14302 “ADS Newsstand” code
• Thin cover
• Newsprint pages
• Prices in black text within a white box

#077 v02 • 73361 code
• Thin cover
• Newsprint pages
• Prices in black text within a white box

#078 • 14302 code
• Thin cover
• Newsprint pages

#079 • 14302 code
• Thin cover
• Newsprint pages

#080 • 14302 code
• Thin cover
• Newsprint pages

#081 • 14302 code
• Thin cover
• Newsprint pages

#082 • 14302 code
• Thin cover
• Newsprint pages



- #083**
- 14302 code
 - (cover paper same as direct)
 - Newsprint pages



- #084**
- 14302 code
 - Thin cover
 - Newsprint pages



- #085**
- 14302 code
 - Thin cover
 - Newsprint pages



- #086**
- 14302 code
 - Thin cover
 - Newsprint pages



- #087**
- 14302 code
 - (cover paper same as direct)
 - Newsprint pages



- #088**
- 14302 code
 - (cover paper same as direct)
 - Newsprint pages



- #089**
- 14302 code
 - Thin cover
 - Newsprint pages



- #090**
- 14302 code
 - Thin cover
 - Newsprint pages



- #091**
- 14302 code
 - (cover paper same as direct)
 - Newsprint pages



- #092**
- 14302 code
 - (cover paper same as direct)
 - Newsprint pages



- #093**
- 14302 code
 - Thin cover
 - Newsprint pages



- #094**
- 14302 "Newsstand" code
 - Thin cover
 - Newsprint pages



- #095**
- 14302 code
 - Thin cover
 - Newsprint pages



- #096**
- 14302 code
 - (cover paper same as direct)
 - Newsprint pages



- #097**
- 14302 code
 - (cover paper same as direct)
 - Newsprint pages



- #098**
- 74470 "Newsstand" code
 - Thin cover
 - Newsprint pages



- #099**
- 74470 code
 - (cover paper same as direct)
 - Newsprint pages



- #100**
- 25274 code
 - "McFarlane" variant cover only
 - (cover paper same as direct)
 - Newsprint pages

Issues 101-105 have, by far, the greatest number of variations due primarily to the various correction stickers applied by the manufacturer to the barcodes. There are 4 basic types of stickers that were used, as seen here on issue #101:



Additionally, some of the correction stickers themselves had errors on them that were changed. The last two digits in the barcode typically designate the issue numbers. But on some of the stickers, the code for the previous issue was re-used by mistake.



In this example from issue #104, notice the "Prices" sticker had the last 2 digits '13', which was the code for issue #103.

Subsequent issues had the adjusted '14' issue code stickers applied.

#101 v04 • 74470 code on "e" sticker
• (cover paper same as direct)
• Newsprint pages

#102 v01 • 74470 code (no sticker)
• Thin cover
• Newsprint pages

#102 v02 • 74470 code on "Prices" Sticker
• 11 issue code
• Thin cover
• Newsprint pages

#102 v03 • 74470 code on "Prices" Sticker
• 12 issue code
• Thin cover
• Newsprint pages

#102 v04 • 74470 code on "e" sticker
• Thin cover
• Newsprint pages

#103 v01 • 74470 code (no sticker)
• Thin cover
• Newsprint pages

#103 v02 • 74470 code on "Prices" Sticker
• 12 issue code
• Thin cover
• Newsprint pages

#103 v03 • 74470 code on "Prices" Sticker
• 13 issue code
• Thin cover
• Newsprint pages

#103 v04 • 14302 code on "Prices" Sticker
• 12 issue code
• Thin cover
• Newsprint pages

#103 v05 • 14302 code on "Prices" Sticker
• 13 issue code
• Thin cover
• Newsprint pages

#101 v01 • 74470 code (no sticker)
• (cover paper same as direct)
• Newsprint pages

#101 v02 • 74470 code on "Prices" Sticker
• (cover paper same as direct)
• Newsprint pages

#101 v03 • 74470 code on "No Prices" sticker
• (cover paper same as direct)
• Newsprint pages

#103 v06 • 74470 code on “No Prices” Sticker
• 13 issue code
• Thin cover
• Newsprint pages

#103 v07 • 74470 code on “e” Sticker
• Thin cover
• Newsprint pages

#104 v01 • 74470 code (no sticker)
• Thin cover
• Newsprint pages

#104 v02 • 74470 code on “Prices” Sticker
• 13 issue code
• Thin cover
• Newsprint pages

#104 v03 • 74470 code on “Prices” Sticker
• 14 issue code
• Thin cover
• Newsprint pages

#104 v04 • 14302 code on “Prices” Sticker
• 13 issue code
• Thin cover
• Newsprint pages

#104 v05 • 74470 code on “No Prices” Sticker
• 14 issue code
• Thin cover
• Newsprint pages

#104 v06 • 74470 code on “e” Sticker
• Thin cover
• Newsprint pages

#105 v01 • 74470 code (no sticker)
• Thin cover
• Newsprint pages

#105 v02 • 74470 code on “e” Sticker
• Thin cover
• Newsprint pages

#106 • 74470 code
• Thin cover
• Newsprint pages

#107 • 74470 code
• Thin cover
• Newsprint pages

#108 • 74470 code
• Thin cover
• Newsprint pages

#109 v01 • 74470 code (no sticker)
• Thin cover
• Newsprint pages

#109 v02 • 74470 code on “Canada” sticker
• Thin cover
• Newsprint pages

#110 • 74470 code
• (cover paper same as direct)
• Newsprint pages

Issue #111 is exceedingly rare, with only 1 copy found!

#111 • 74470 code
• Thin cover
• Newsprint pages

#112 • 74470 code
• Thin cover
• Newsprint pages

Issues #113-115 were released only in direct edition format. No newsstand editions exist.

Issue #116 was printed on the same glossy paper as its direct edition counterpart.

#116 • 74470 code
• (cover paper same as direct)
• Glossy pages (same as direct)

#117 • 74470 code
• Thin cover
• Newsprint pages

#118 • 74470 code
• Thin cover
• Newsprint pages

#119 • 74470 code
• Thin cover
• Newsprint pages

#120 • 74470 code
• Thin cover
• Newsprint pages

#121 • 74470 code
• Thin cover
• Newsprint pages

#122 • 74470 code
• Thin cover
• Newsprint pages

The final 15 newsstand issues (Issues #123-#137), were all printed on the same glossy paperstock as the direct editions (for both the cover and interior pages)

#123 • 74470 code
• (cover paper same as direct)
• Glossy pages (same as direct)

#124 • 74470 code
• (cover paper same as direct)
• Glossy pages (same as direct)

#125 • 74470 code
• (cover paper same as direct)
• Glossy pages (same as direct)

#126 • 74470 code
• (cover paper same as direct)
• Glossy pages (same as direct)

#127 • 74470 code
• (cover paper same as direct)
• Glossy pages (same as direct)

#128 • 74470 code
• (cover paper same as direct)
• Glossy pages (same as direct)

#129 • 74470 code
• (cover paper same as direct)
• Glossy pages (same as direct)

#130 • 74470 code
• (cover paper same as direct)
• Glossy pages (same as direct)

#131 • 74470 code
• (cover paper same as direct)
• Glossy pages (same as direct)

#132 • 74470 code
• (cover paper same as direct)
• Glossy pages (same as direct)

#133 • 74470 code
• (cover paper same as direct)
• Glossy pages (same as direct)

#134 • 74470 code
• (cover paper same as direct)
• Glossy pages (same as direct)

#135 • 74470 code
• (cover paper same as direct)
• Glossy pages (same as direct)

#136 • 74470 "Thin" code
• (cover paper same as direct)
• Glossy pages (same as direct)

#137 • 74470 "Thin" code
• (cover paper same as direct)
• Glossy pages (same as direct)

 / 213 Total

CURSE OF THE SPAWN

<input type="checkbox"/> #01	<ul style="list-style-type: none">• 70989 code
<input type="checkbox"/> v01	<ul style="list-style-type: none">• Newsprint pages

<input type="checkbox"/> #01	<ul style="list-style-type: none">• 73361 code
<input type="checkbox"/> v02	<ul style="list-style-type: none">• Newsprint pages

<input type="checkbox"/> #02	<ul style="list-style-type: none">• 70989 code
<input type="checkbox"/> v01	<ul style="list-style-type: none">• Newsprint pages

<input type="checkbox"/> #02	<ul style="list-style-type: none">• 73361 code
<input type="checkbox"/> v02	<ul style="list-style-type: none">• Newsprint pages

<input type="checkbox"/> #03	<ul style="list-style-type: none">• 70989 code
<input type="checkbox"/> v01	<ul style="list-style-type: none">• Newsprint pages

<input type="checkbox"/> #03	<ul style="list-style-type: none">• 73361 code
<input type="checkbox"/> v02	<ul style="list-style-type: none">• Newsprint pages

<input type="checkbox"/> #04	<ul style="list-style-type: none">• 70989 code
<input type="checkbox"/> v01	<ul style="list-style-type: none">• Newsprint pages

<input type="checkbox"/> #04	<ul style="list-style-type: none">• 73361 code
<input type="checkbox"/> v02	<ul style="list-style-type: none">• Newsprint pages

<input type="checkbox"/> #05	<ul style="list-style-type: none">• 70989 code
<input type="checkbox"/> v01	<ul style="list-style-type: none">• Newsprint pages

<input type="checkbox"/> #05	<ul style="list-style-type: none">• 73361 code
<input type="checkbox"/> v02	<ul style="list-style-type: none">• Newsprint pages

<input type="checkbox"/> #06	<ul style="list-style-type: none">• 70989 code
<input type="checkbox"/> v01	<ul style="list-style-type: none">• Newsprint pages

<input type="checkbox"/> #06	<ul style="list-style-type: none">• 73361 code
<input type="checkbox"/> v02	<ul style="list-style-type: none">• Newsprint pages

<input type="checkbox"/> #07	<ul style="list-style-type: none">• 70989 code
<input type="checkbox"/> v01	<ul style="list-style-type: none">• Newsprint pages

<input type="checkbox"/> #07	<ul style="list-style-type: none">• 73361 code
<input type="checkbox"/> v02	<ul style="list-style-type: none">• Newsprint pages

<input type="checkbox"/> #08	<ul style="list-style-type: none">• 70989 code
<input type="checkbox"/> v01	<ul style="list-style-type: none">• Newsprint pages

<input type="checkbox"/> #08	<ul style="list-style-type: none">• 73361 code
<input type="checkbox"/> v02	<ul style="list-style-type: none">• Newsprint pages



Curse of the Spawn #9 has a unique "boxless" barcode.

<input type="checkbox"/> #09	<ul style="list-style-type: none">• 70989 "Boxless" code
<input type="checkbox"/> v01	<ul style="list-style-type: none">• Newsprint pages

<input type="checkbox"/> #09	<ul style="list-style-type: none">• 73361 "Boxless" code
<input type="checkbox"/> v02	<ul style="list-style-type: none">• Newsprint pages

<input type="checkbox"/> #10	<ul style="list-style-type: none">• 70989 code
<input type="checkbox"/> v01	<ul style="list-style-type: none">• Newsprint pages

<input type="checkbox"/> #10	<ul style="list-style-type: none">• 73361 code
<input type="checkbox"/> v02	<ul style="list-style-type: none">• Newsprint pages

<input type="checkbox"/> #11	<ul style="list-style-type: none">• 70989 code
<input type="checkbox"/> v01	<ul style="list-style-type: none">• Newsprint pages

<input type="checkbox"/> #11	<ul style="list-style-type: none">• 73361 code
<input type="checkbox"/> v02	<ul style="list-style-type: none">• Newsprint pages

#12 • 70989 code
v01 • Newsprint pages

#12 • 73361 code
v02 • Newsprint pages

#13 • 70989 code
v01 • Newsprint pages

#13 • 73361 code
v02 • Newsprint pages

#14 • 70989 code
v01 • Newsprint pages

#14 • 73361 code
v02 • Newsprint pages

#15 • 70989 code
v01 • Newsprint pages

#15 • 73361 code
v02 • Newsprint pages

#16 • 73361 code
• Glossy pages (same as direct)

#17 • 73361 code
• Glossy pages (same as direct)

#18 • 73361 code
• Glossy pages (same as direct)

#19 • 73361 code
• Glossy pages (same as direct)

#20 • 14302 code
v01 • Newsprint pages

#20 • 73361 code
v02 • Newsprint pages

Issues 21 and 22 both had barcode adjustment stickers applied by the manufacturer.



Issues #16-19 were printed on the same thick, glossy paper as their direct edition counterparts, and were only released from the secondary distributor.



Curse of the Spawn #17 newsstand edition is one of the rarest Spawn comics there is – fewer than 10 copies are known to exist.

#21 • 14302 code on “No Prices” sticker
v01 • Newsprint pages

#21 • 73361 code on “e” sticker
v02 • Newsprint pages



#22 • 14302 code (no sticker)
v01 • Newsprint pages

#22 • 73361 code on “e” sticker
v02 • Newsprint pages

#23 • 14302 code
v01 • Newsprint pages

#23 • 73361 code
v02 • Newsprint pages

#24 • 14302 code
v01 • Newsprint pages

#24 • 73361 code
v02 • Newsprint pages

#25 • 14302 “ADS Newsstand” code
v01 • Newsprint pages

#25 • 73361 code
v02 • Newsprint pages

Issue #25 was the final issue with two distributors.

#26 • 14302 code
 • Newsprint pages

#27 • 14302 code
 • Newsprint pages

#28 • 14302 code
 • Newsprint pages

#29 • 14302 code
 • Newsprint pages

_____ / 50 Total

SPAWN: THE DARK AGES

- #01** • 14302 code
• Newsprint pages
- #02** • 14302 code
• Newsprint pages
- #03** • 14302 code
• Newsprint pages
- #04** • 14302 code
• Newsprint pages
- #05** • 14302 code
• Newsprint pages
- #06** • 14302 code
• Newsprint pages
- #07** • 14302 code
• Newsprint pages
- #08** • 14302 "Newsstand" code
• Newsprint pages
- #09** • 14302 code
• Newsprint pages
- #10** • 14302 code
• Newsprint pages
- #11** • 14302 "Newsstand" code
• Newsprint pages
- #12** • 14302 code
• Newsprint pages
- #13** • 14302 code
• Newsprint pages
- #14** • 14302 code
• Newsprint pages

- #15** • 14302 code
• Newsprint pages
- #16** • 14302 code
• Newsprint pages
- #17** • 14302 code
• Newsprint pages
- #18** • 14302 code
• Newsprint pages
- #19** • 14302 code
• Newsprint pages
- #20** • 14302 code
• Newsprint pages
- #21** • 14302 code
• Newsprint pages
- #22** • 14302 code
• Newsprint pages
- #23** • 14302 code
• Newsprint pages
- #24** • 14302 code
• Newsprint pages
- #25** • 14302 code
• Newsprint pages
- #26** • 14302 code
• Newsprint pages
- #27** • 14302 code
• Newsprint pages
- #28** • 14302 code
• Glossy pages (same as direct)

____ / 28 Total

MISCELLANEOUS

SPAWN BIBLE

<input type="checkbox"/> #01	<ul style="list-style-type: none">• 70989 code• Newsprint pages
------------------------------	--

SPAWN / BATMAN

<input type="checkbox"/> #01	<ul style="list-style-type: none">• 70989 yellow code on back cover• Glossy pages (same as direct)
------------------------------	---

BATMAN / SPAWN: WAR DEVIL

<input type="checkbox"/> #01	<ul style="list-style-type: none">• 70989 code on back cover• Glossy pages (same as direct)
------------------------------	--

ANGELA

<input type="checkbox"/> #01	<ul style="list-style-type: none">• 70989 yellow code on back cover• Glossy pages (same as direct)
------------------------------	---

<input type="checkbox"/> #02	<ul style="list-style-type: none">• 70989 yellow code on back cover• Glossy pages (same as direct)
------------------------------	---

<input type="checkbox"/> #03	<ul style="list-style-type: none">• 70989 yellow code on back cover• Glossy pages (same as direct)
------------------------------	---

SPAWN: BLOODFEUD

<input type="checkbox"/> #01	<ul style="list-style-type: none">• 70989 code• Newsprint pages
------------------------------	--

<input type="checkbox"/> #02	<ul style="list-style-type: none">• 70989 code• Newsprint pages
------------------------------	--

<input type="checkbox"/> #03	<ul style="list-style-type: none">• 70989 code• Newsprint pages
------------------------------	--

<input type="checkbox"/> #04	<ul style="list-style-type: none">• 70989 code• Newsprint pages
------------------------------	--

VIOLATOR

<input type="checkbox"/> #01	<ul style="list-style-type: none">• 70989 code• Newsprint pages
------------------------------	--

<input type="checkbox"/> #01	<ul style="list-style-type: none">• 73361 code• Newsprint pages
------------------------------	--

<input type="checkbox"/> #02	<ul style="list-style-type: none">• 70989 code• Newsprint pages
------------------------------	--

<input type="checkbox"/> #02	<ul style="list-style-type: none">• 73361 code• Newsprint pages
------------------------------	--

<input type="checkbox"/> #03	<ul style="list-style-type: none">• 70989 code• Newsprint pages
------------------------------	--

<input type="checkbox"/> #03	<ul style="list-style-type: none">• 73361 code• Newsprint pages
------------------------------	--

SPAWN / WILDC.A.T.S

<input type="checkbox"/> #01	<ul style="list-style-type: none">• 70989 code• Newsprint pages
------------------------------	--

<input type="checkbox"/> #02	<ul style="list-style-type: none">• 70989 code• Newsprint pages
------------------------------	--

<input type="checkbox"/> #03	<ul style="list-style-type: none">• 70989 code• Newsprint pages
------------------------------	--

<input type="checkbox"/> #04	<ul style="list-style-type: none">• 74470 code• Newsprint pages
------------------------------	--

MEDIEVAL SPAWN / WITCHBLADE

<input type="checkbox"/>	#01 v01	<ul style="list-style-type: none">• 70989 code• Newsprint pages
--------------------------	--------------------------	--

<input type="checkbox"/>	#01 v02	<ul style="list-style-type: none">• 73361 code• Newsprint pages
--------------------------	--------------------------	--

<input type="checkbox"/>	#02 v01	<ul style="list-style-type: none">• 70989 code• Newsprint pages
--------------------------	--------------------------	--

<input type="checkbox"/>	#02 v02	<ul style="list-style-type: none">• 73361 code• Newsprint pages
--------------------------	--------------------------	--

<input type="checkbox"/>	#03 v01	<ul style="list-style-type: none">• 70992 code• Newsprint pages
--------------------------	--------------------------	--

<input type="checkbox"/>	#03 v02	<ul style="list-style-type: none">• 73361 code• Newsprint pages
--------------------------	--------------------------	--

SPAWN THE IMPALER

<input type="checkbox"/>	#01	<ul style="list-style-type: none">• 70989 code• Newsprint pages
--------------------------	------------	--

<input type="checkbox"/>	#02	<ul style="list-style-type: none">• 70989 code• Newsprint pages
--------------------------	------------	--

<input type="checkbox"/>	#03	<ul style="list-style-type: none">• 70989 code• Newsprint pages
--------------------------	------------	--

____ / 29 Total

____ / 320 Grand Total

Last updated 3/17/2023